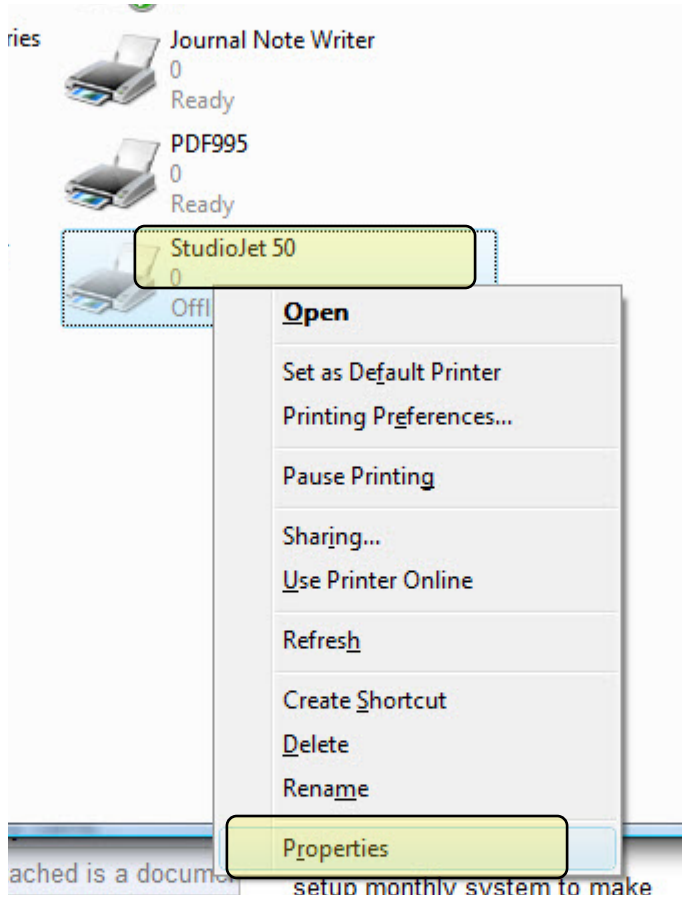


**RECORDEX USA**  
**StudioJet 50/100**

**ENABLING HUB PRINTING**

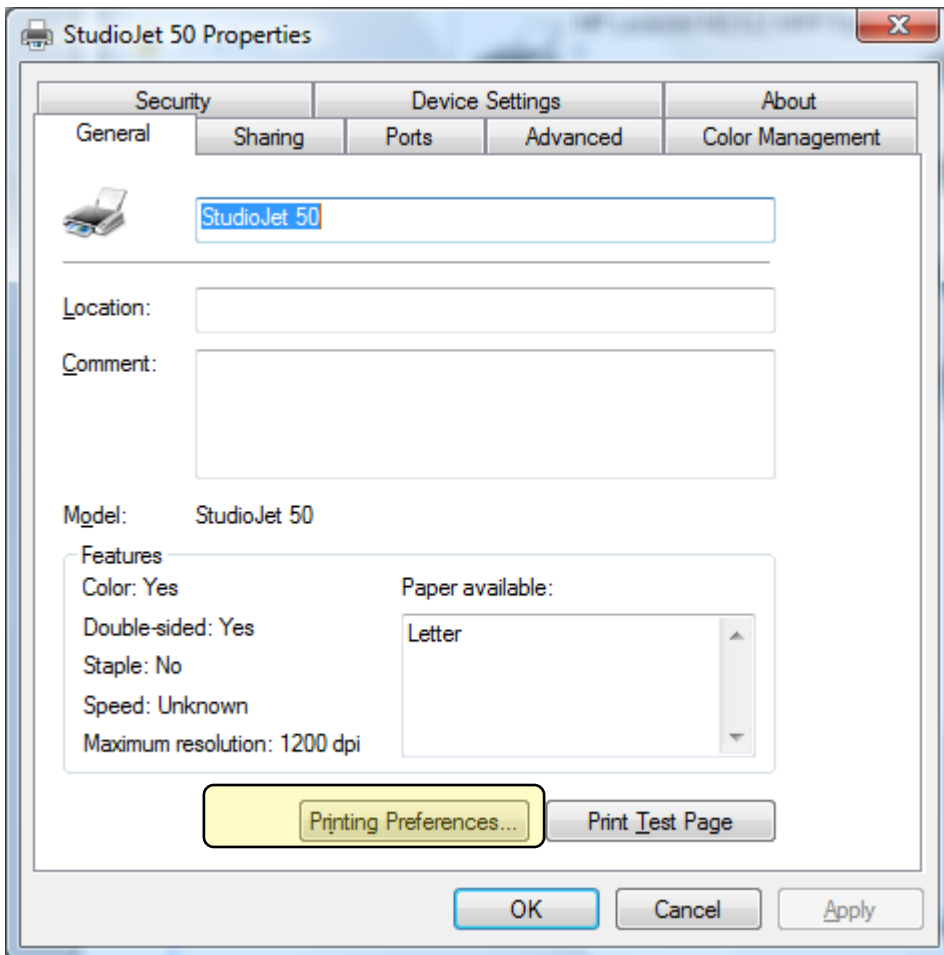


Right click on the StudioJet under printer.

(to access printers type “printers” in the start menu search box)

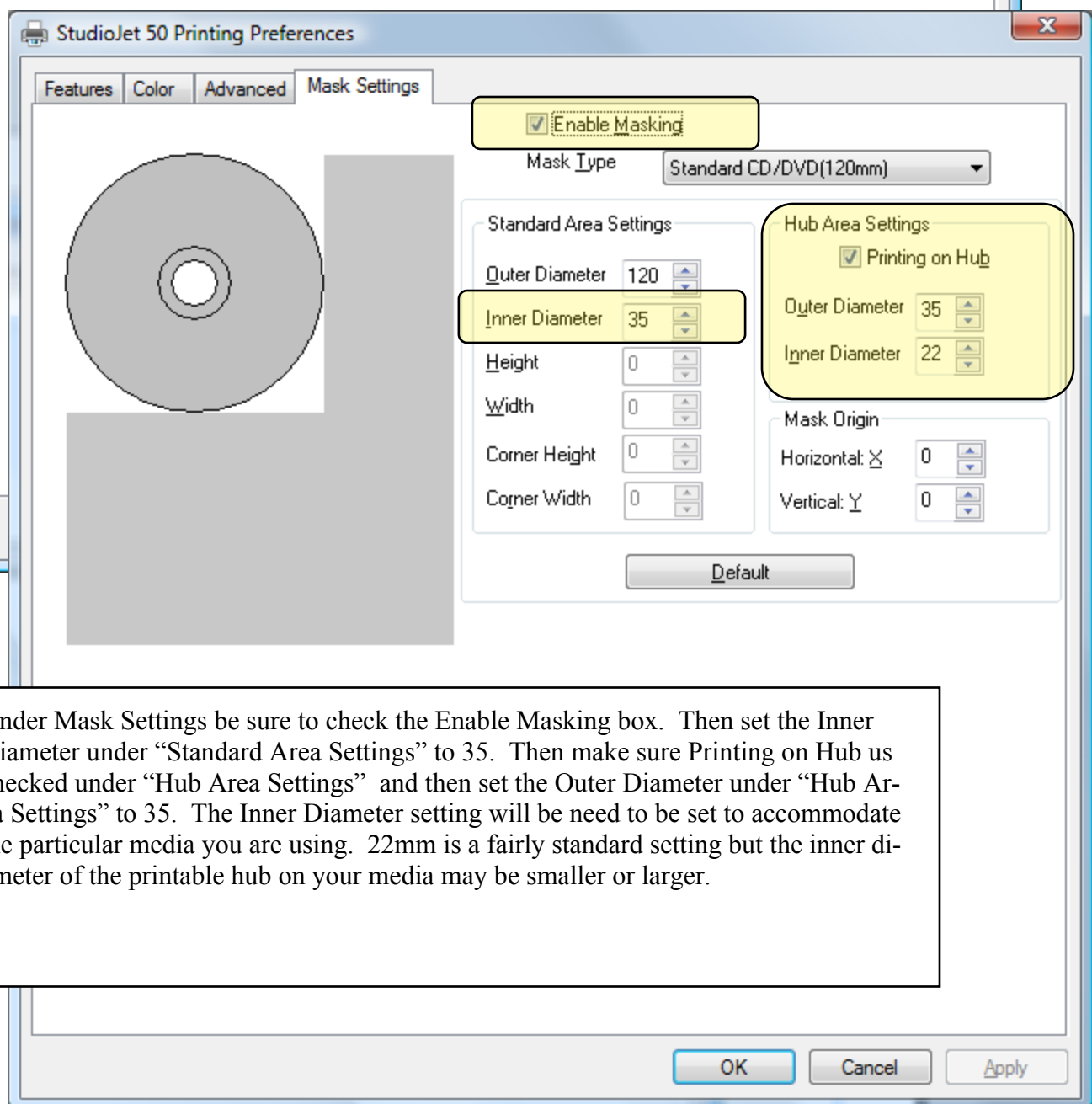
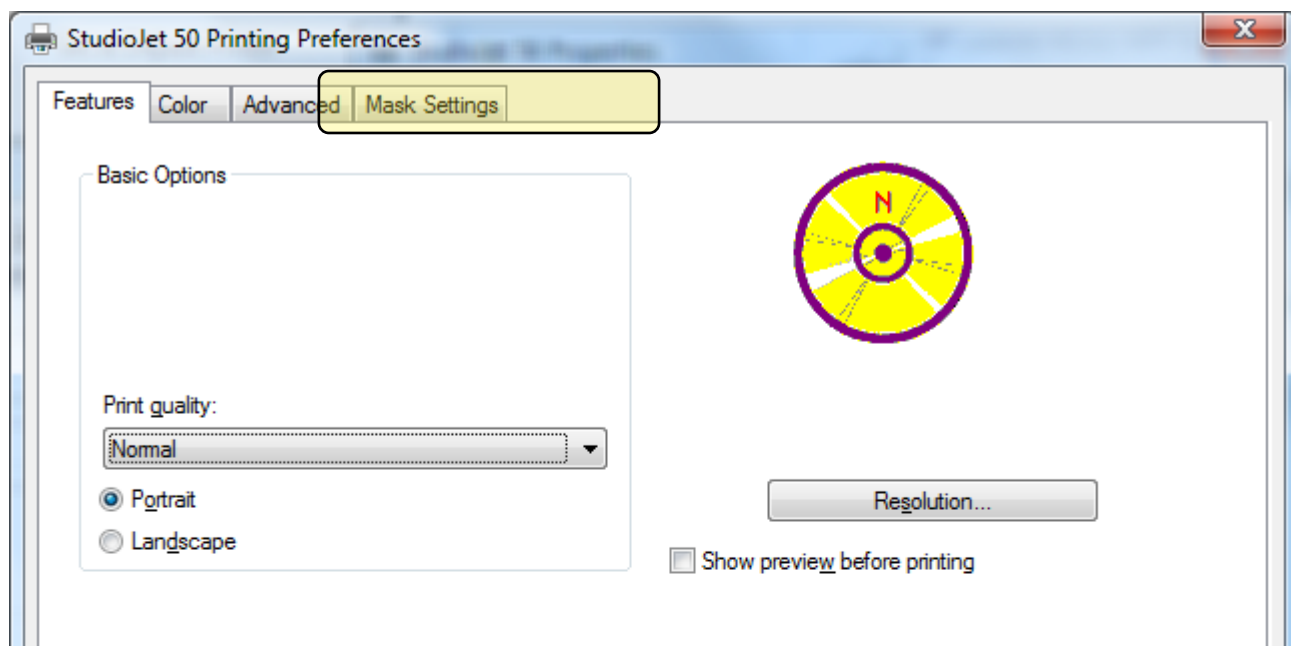


Then click on Properties to open the printer’s driver dialog window.



Click on Printing Preferences

Click on Mask Settings Tab



Under Mask Settings be sure to check the Enable Masking box. Then set the Inner Diameter under “Standard Area Settings” to 35. Then make sure Printing on Hub is checked under “Hub Area Settings” and then set the Outer Diameter under “Hub Area Settings” to 35. The Inner Diameter setting will need to be set to accommodate the particular media you are using. 22mm is a fairly standard setting but the inner diameter of the printable hub on your media may be smaller or larger.